

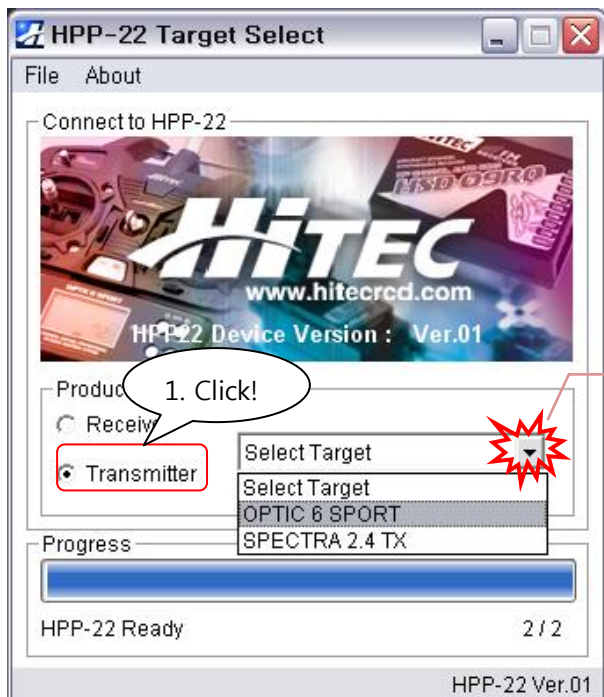
HPP-22 User's Manual for Optic 6 Sport

- Table of Content -

1. Connecting Method
2. Feature Description
3. Feature Setup
4. Other Features

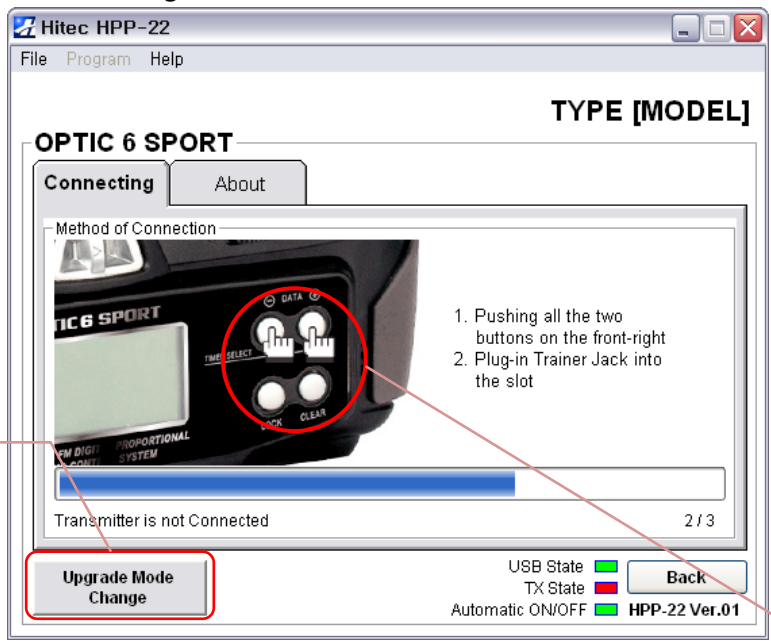
1. Connection Method

- A. Run the program first, then select a receiver to change the setup

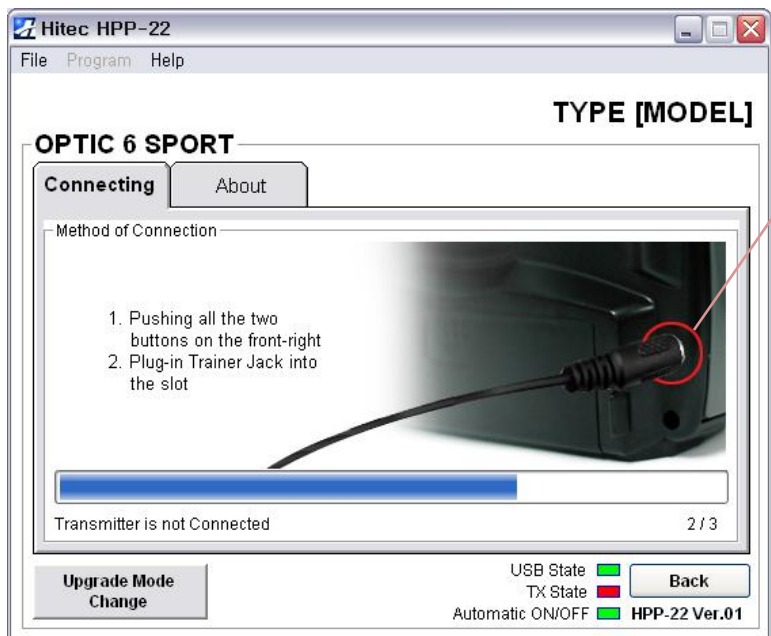


B. Connect HPP-22 and the transmitter as you see below:

● Connecting Method



Click the button to select between upgrade mode and setup mode.

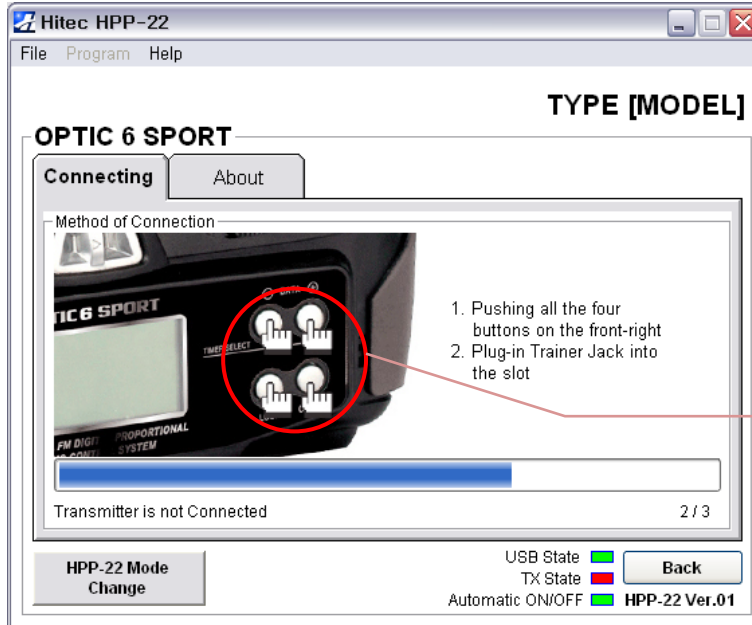


1. Plug-in the specially designed cable to P1 port of HPP-22.

2. Press & Hold the two buttons of the Optic 6 Sport

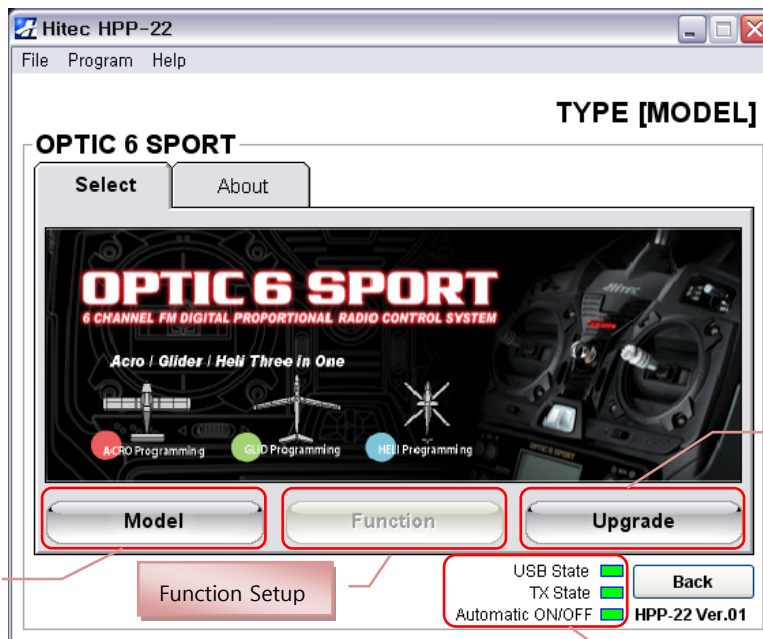
3. While you hold the buttons plug-in the other end of the cable into the slot located on the back of Optic 6 Sport.

- Update Mode



While press & hold all the four buttons simultaneously, plug-in the connector to activate the upgrade Mode.

2. Features



Switch to Update Mode

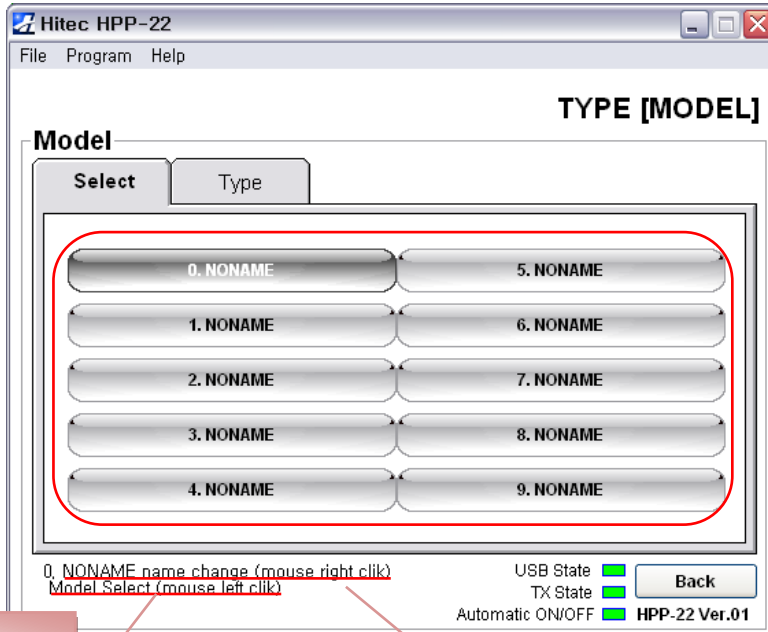
Click to select a model

Function Setup

<Main Screen>

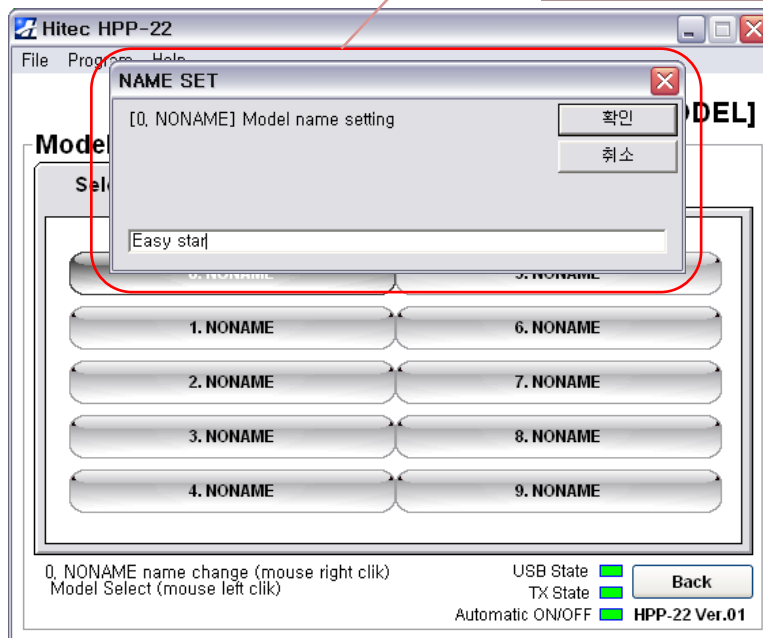
Connectivity Status Monitor

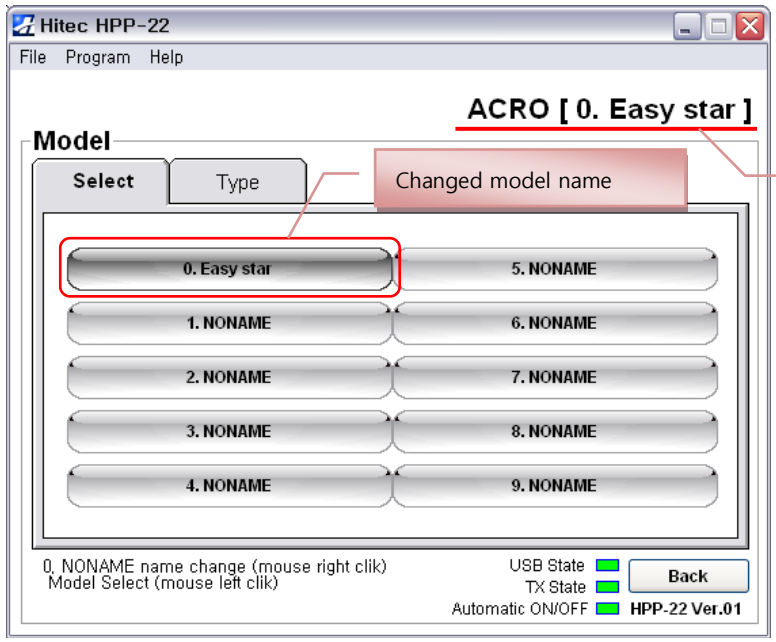
A. Select Model



Use the left mouse button to select a model you wish to use

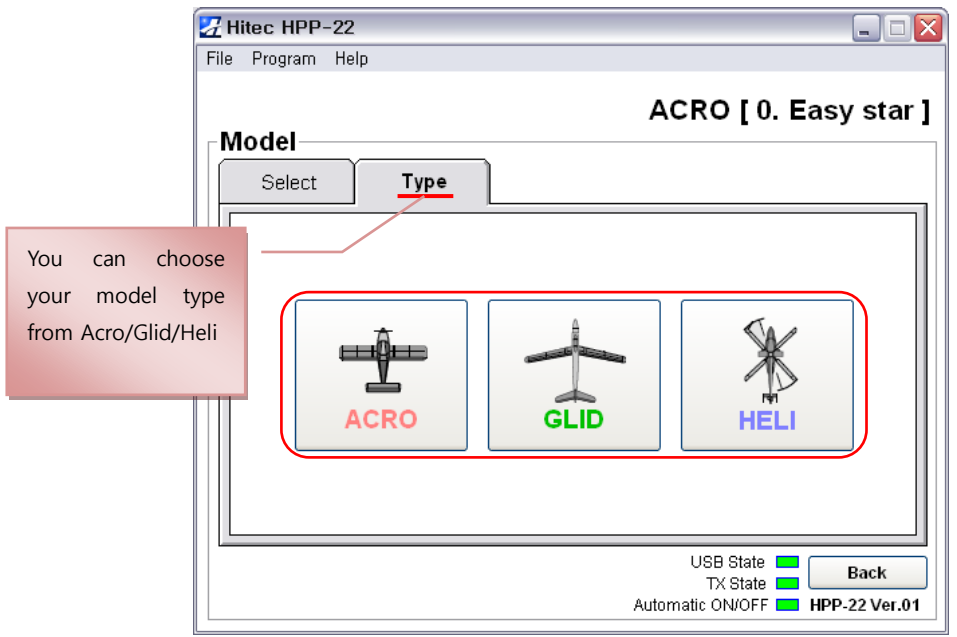
Use the right mouse button to change the model name which you choose.

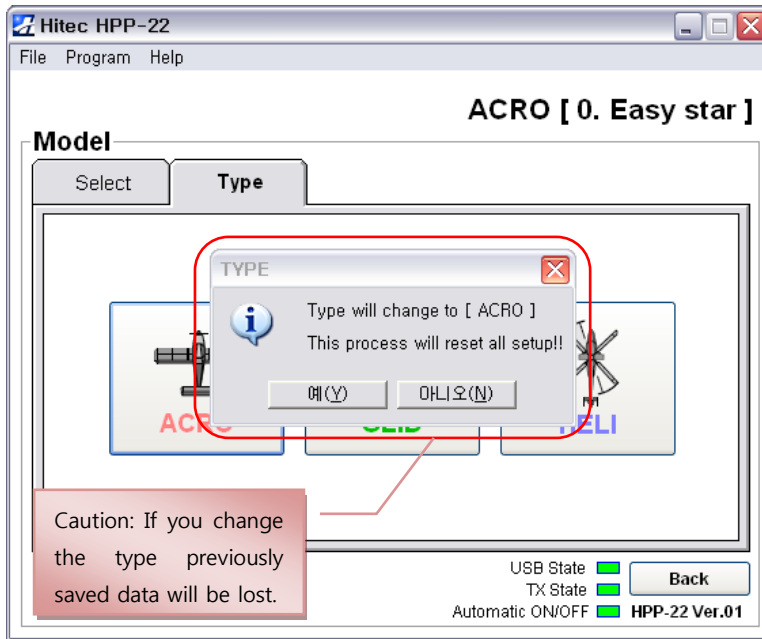




Currently selected model type and its name

B. Selecting a Model Type

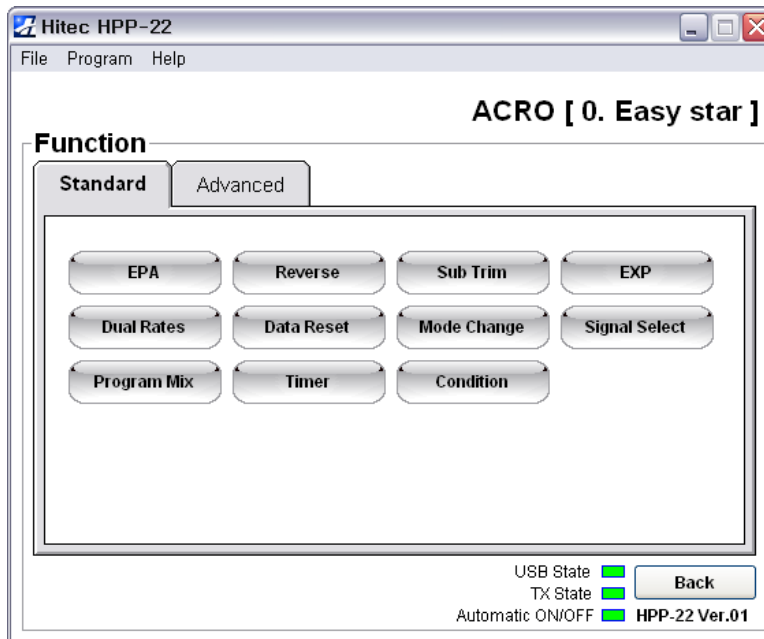




3. Function Setup

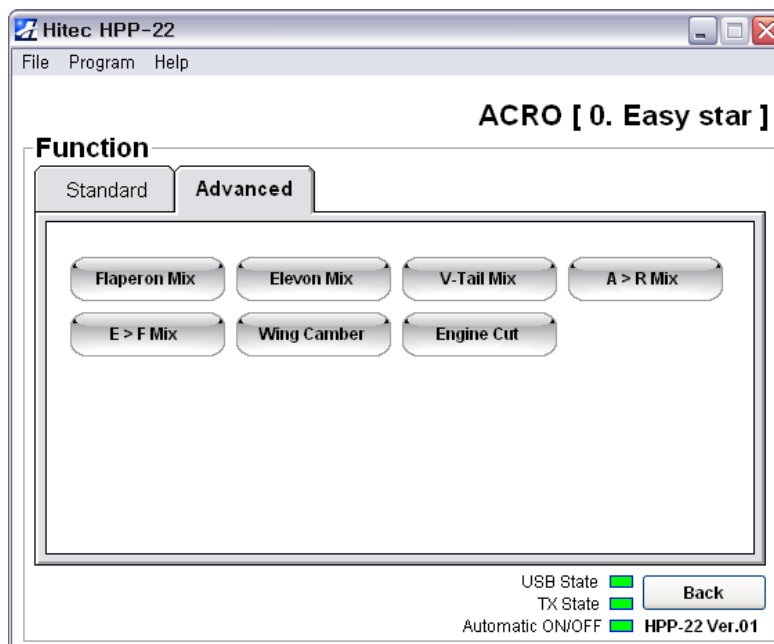


A. Common Features

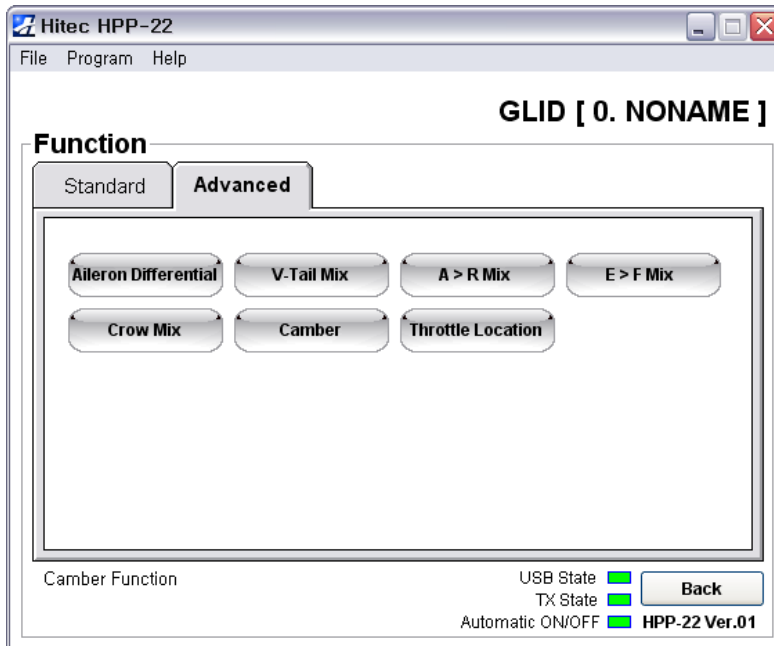


B. Features by Type

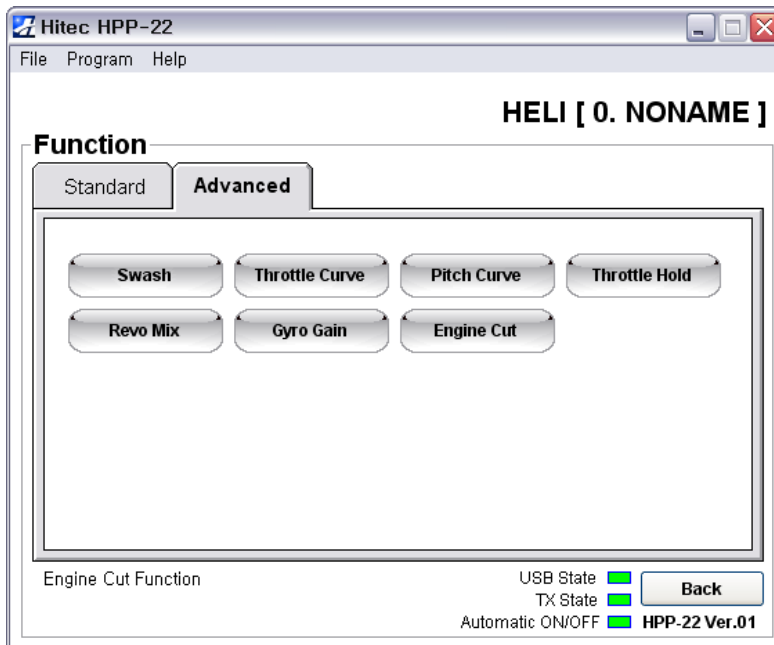
I. ACRO



II. GLID

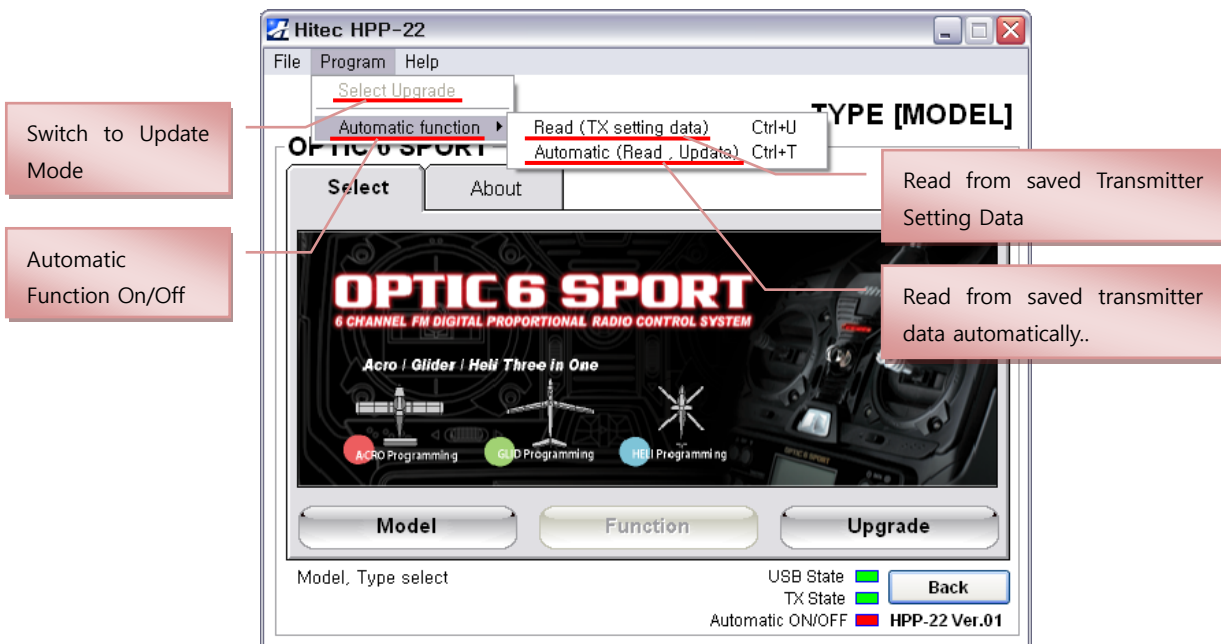


III. HELI

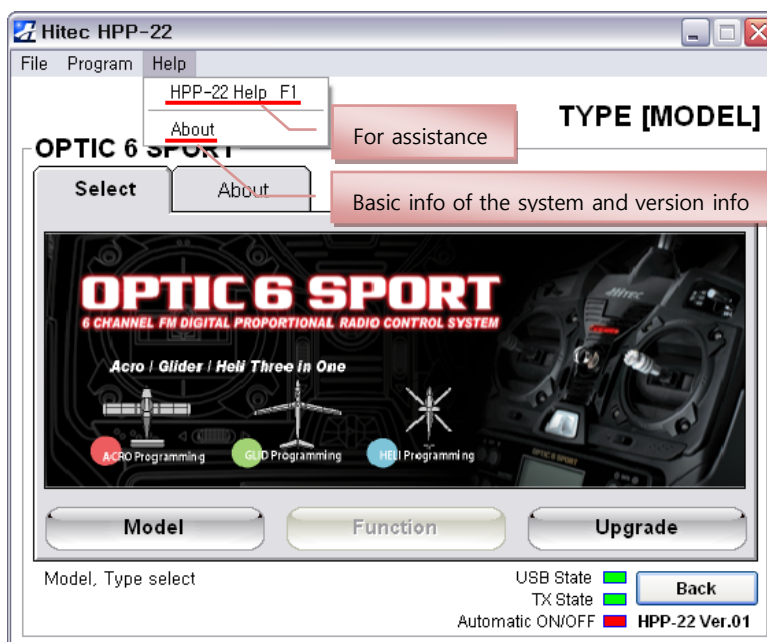


If you select either Save or Save as... you can save the setting as an Excel format and also open with Microsoft Excel to change the setting value. (on this example, adjustable value has been marked as aqua color.) change the value on the Excel sheet and use Open menu to apply the changed setting to the transmitter.

B. Program



C. Help assistance





Hitec HPP-22

File Program Help

TYPE [MODEL]

Hitec HPP-22 About

Easy Data Setting & Save,
Real-Time Firmware Upgrade

HPP-22

PC Programmer for Hitec
Transmitters & Receivers

Version: Ver.01

Confirm www.hitecrd.com

Version Info

Close the pop up windows

Link to Hitec website

USB State

TX State

Automatic ON/OFF HPP-22 Ver.01

Back

Upgrade Mode

model

Up