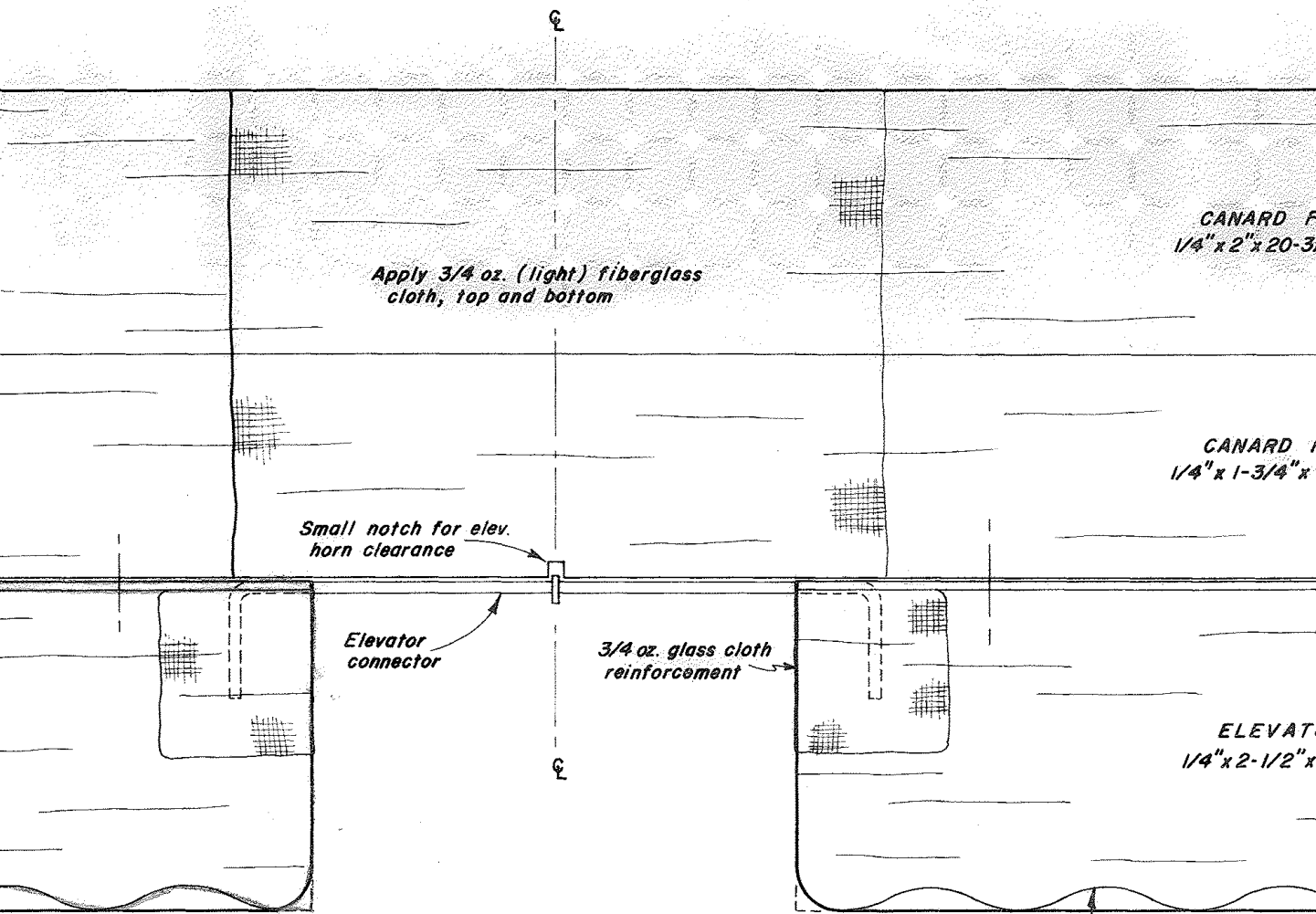


CANARD

Hinge location
(typical)

ELEVATOR

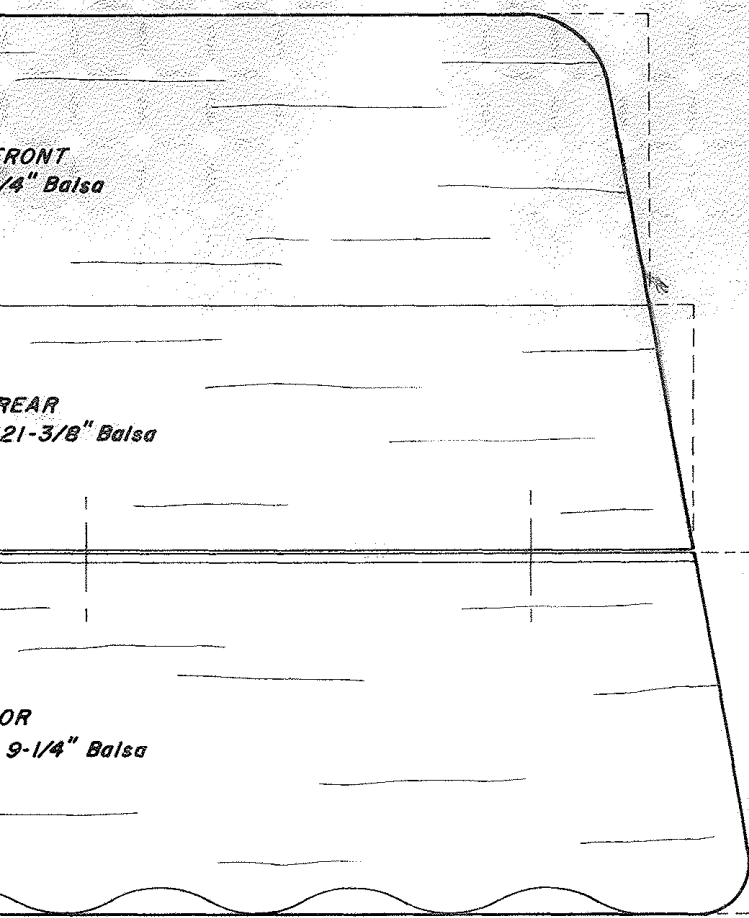


**ELEVATORS MUST DEFLECT
 DOWNWARD WHEN STICK IS
 PULLED BACK FOR A CLIMB!**

- CANA

COPYRIGHT
 PA

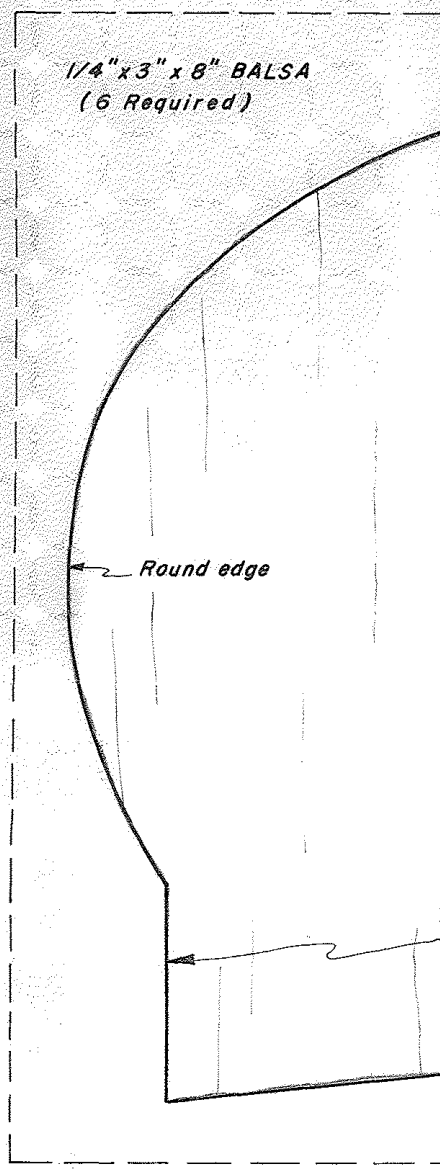
Aug. 15, 1985

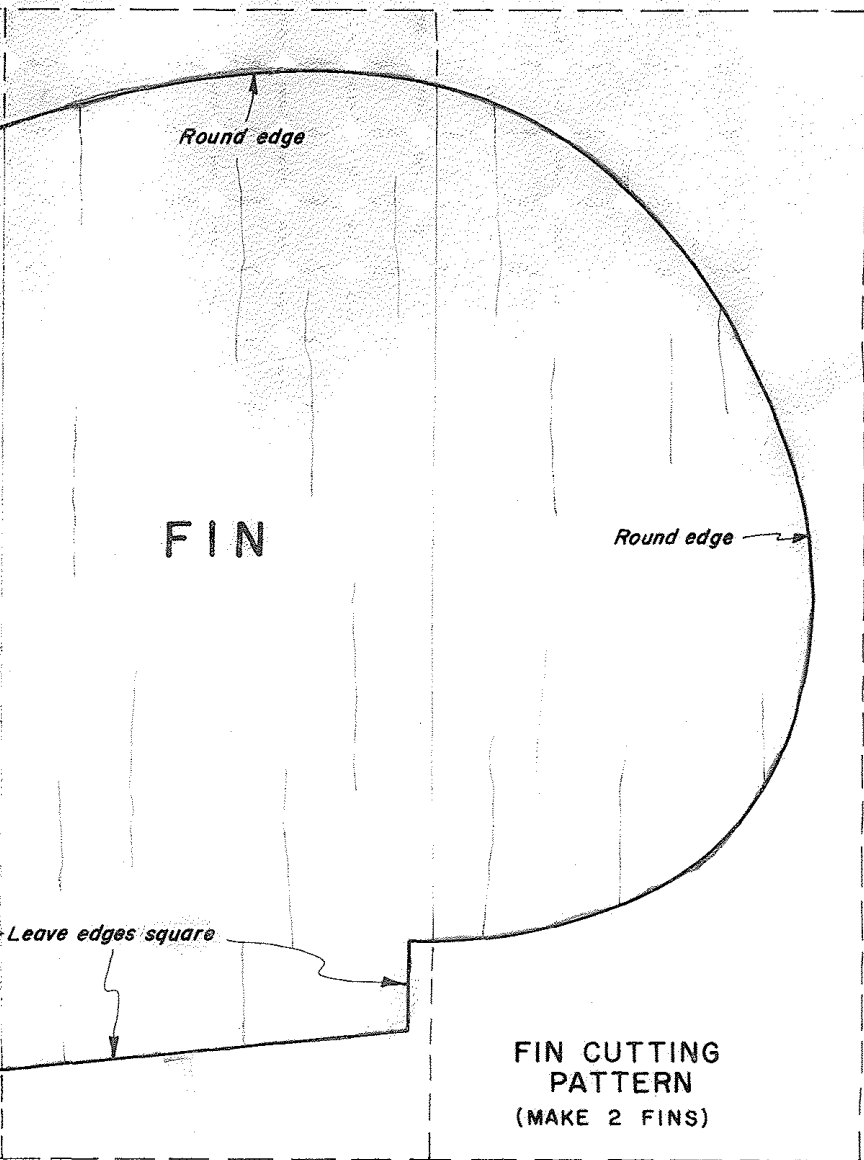


(optional)

WING STICK -

© 1985 ST. CROIX MODELS, INC.
MILWAUKEE FALLS, WISCONSIN





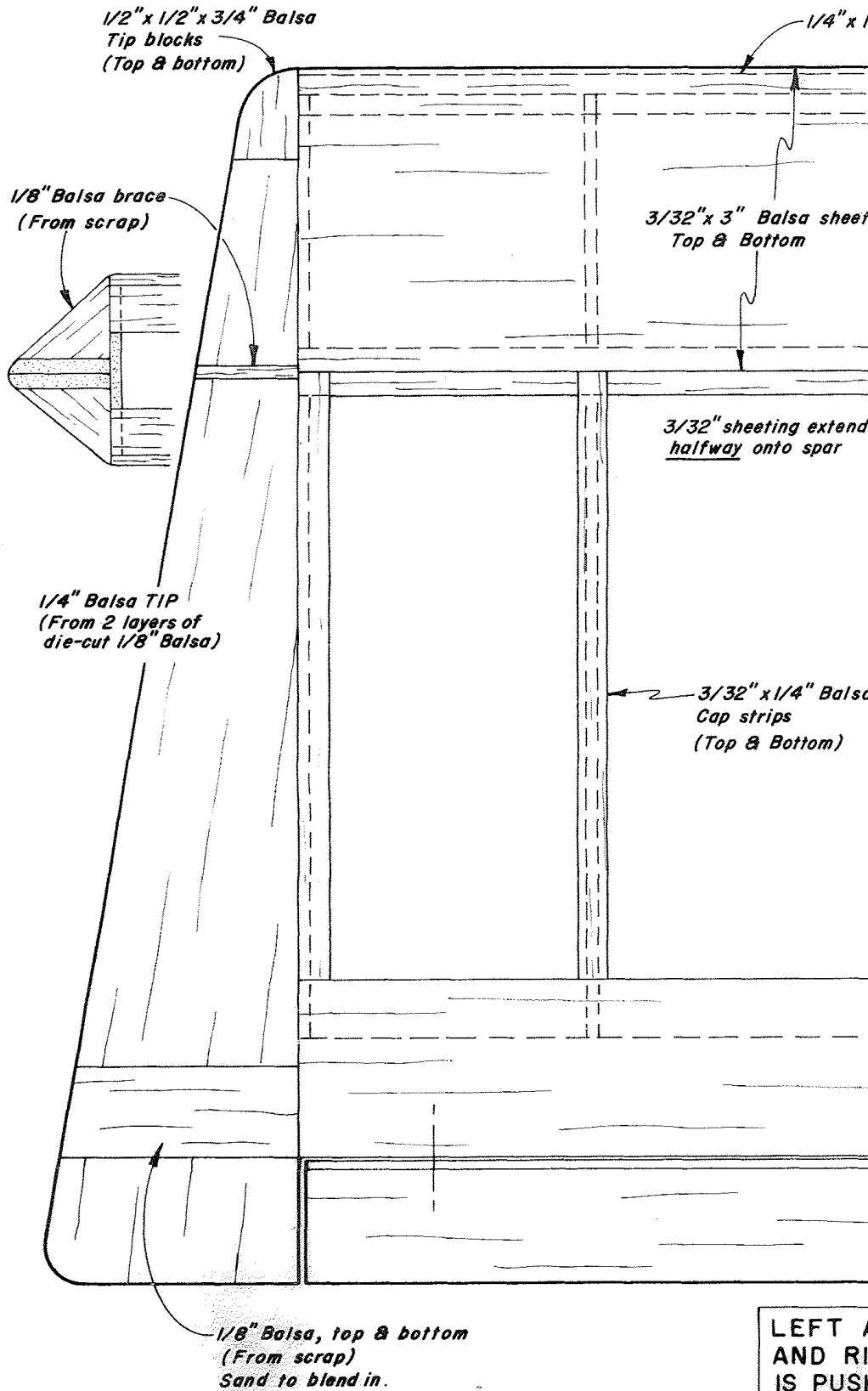
FIN

Round edge

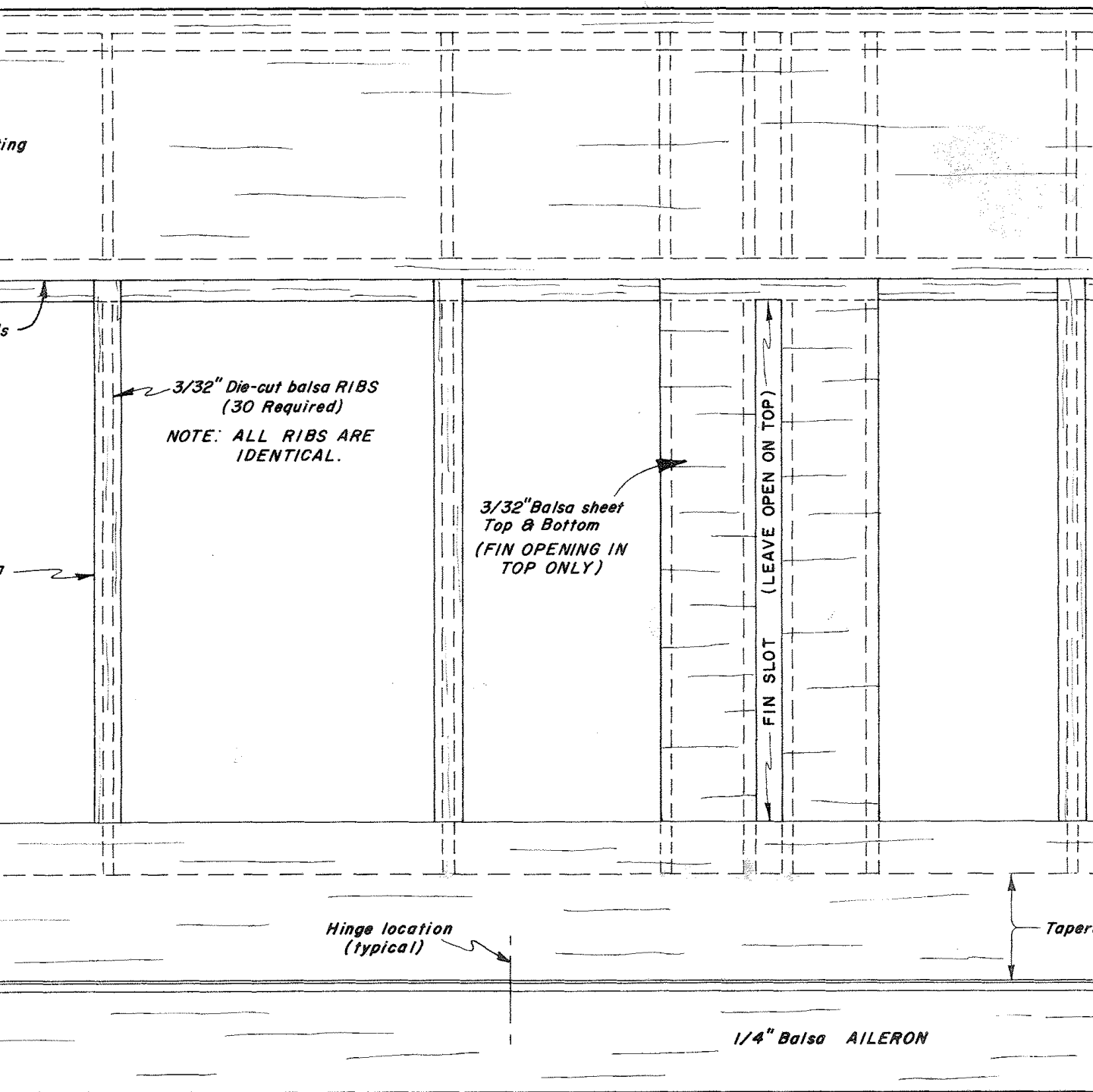
Round edge

Leave edges square

FIN CUTTING
PATTERN
(MAKE 2 FIN)



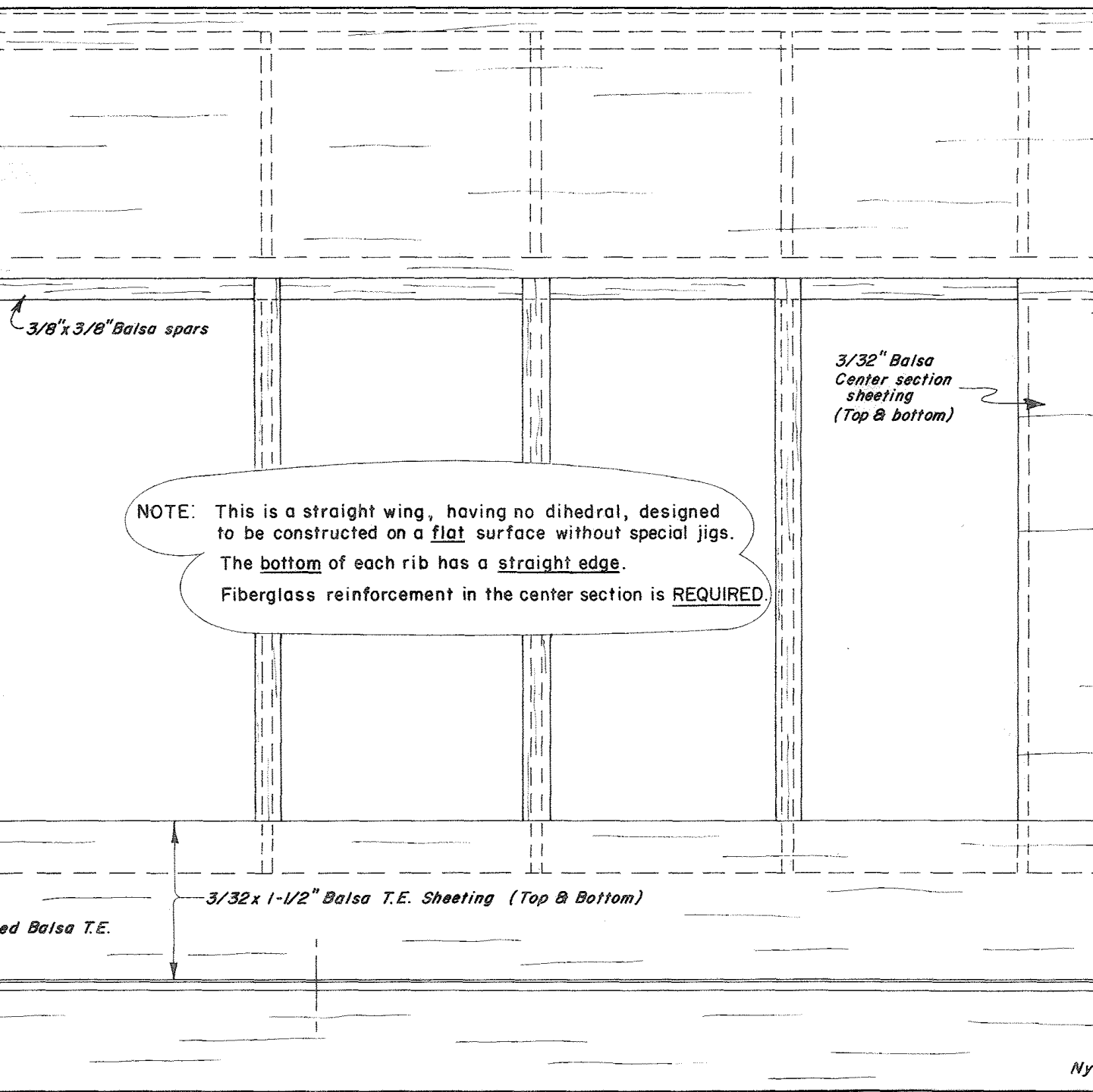
LEFT A
 AND RI
 IS PUS



AILERON MUST DEFLECT DOWNWARD
 RIGHT AILERON UPWARD WHEN STICK
 HELD RIGHT, FOR A RIGHT BANK.

N

(Turn upside-down to build right wing half)



NOTE: This is a straight wing, having no dihedral, designed to be constructed on a flat surface without special jigs. The bottom of each rib has a straight edge. Fiberglass reinforcement in the center section is REQUIRED.

ed Balsa T.E.

3/32 x 1-1/2" Balsa T.E. Sheeting (Top & Bottom)

3/32" Balsa Center section sheeting (Top & bottom)

Ny

