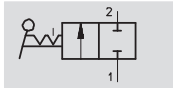


# Ball valves QH/QHS, manually actuated

FESTO


Technical data – with QS plug-in connector

Function



2/2-way

- Suitable for a vacuum

-  - Flow rate  
148 ... 560 l/min



Technical data						
Pneumatic connection	Thread	-	-	R $\frac{1}{8}$	R $\frac{1}{8}$	-
	Tubing O.D. [mm]	4	6	4	6	6
Design	Ball valve					
Valve function	2/2-way, bi-stable					
Sealing principle	Soft					
Type of mounting	In-line installation		Can be screwed in		Bulkhead fitting	
Actuation type	Manual					
Nominal size [mm]	2.5	4	2.5	2.5	4	
Standard nominal flow rate [l/min]	148	533	235	560	528	
Permissible tightening torque [Nm]	-	-	7 ... 9		-	
Materials	Housing: Polybutylene terephthalate					
	Threaded connection: Nickel-plated brass					
Weight [g]	12	13	14	15	17	

Operating and environmental conditions	
Operating pressure [bar]	-1 ... +10
Operating medium	Filtered compressed air, lubricated or unlubricated
Ambient temperature [°C]	0 ... +60

## Dimensions Download CAD data → [www.festo.com](http://www.festo.com)

QS push-in connector, both ends



Tubing O.D. D1	D2 ∅	H	H1	L	L1
4	11	15	13	38	17
6	11	15	13	41.5	17.5