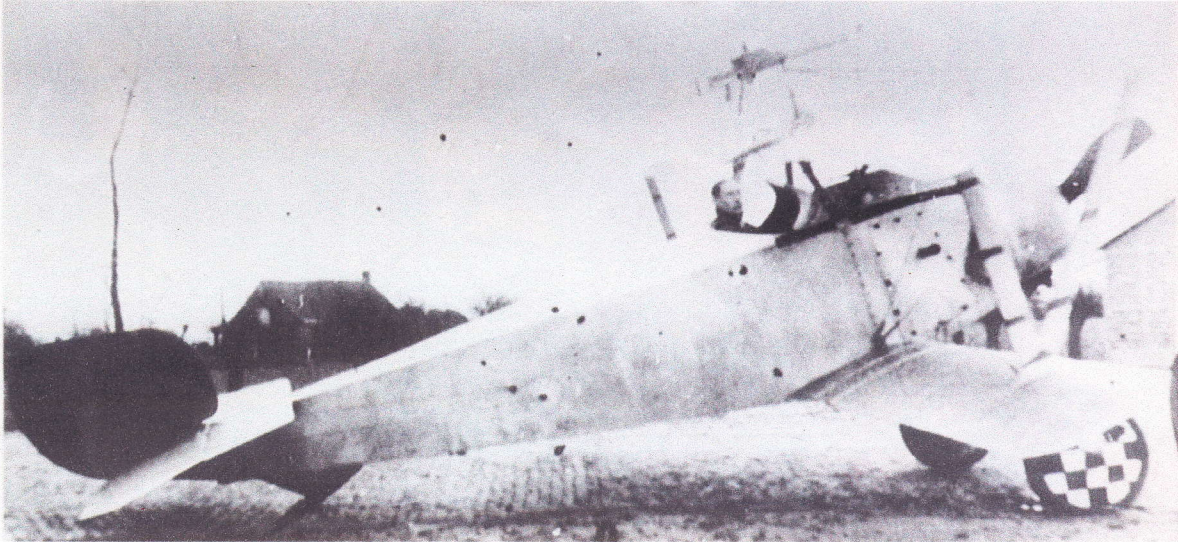


NIEUPOORT TYPE 11



This model is a 1/3 scale replica of a Nieuport Type 11, often referred to as a Nieuport 11 or simply N-11. The Nieuport Company designated their biplane aircraft with the letter B. They also listed their planes by categories and Class B consisted of light, single seat, fighter aircraft. So the N-11 was listed in the company's roster as BB-11. The French pronunciation of the letter B is be': hence the designation became be'be', aurally indistinguishable from the noun be'be', which means "baby". Thus, the nickname of "Baby Nieuport" was bestowed on the Type 11. The color and markings are those of a Belgium owned aircraft flown by Teddy Franchomme.

DECLARATION:

This 1/3 scale N-11 is my design and was scratch built. The wheels and cowl were obtained from Balsa USA and the Lewis gun was obtained from Lucky Dog Productions. The rest of the model was completely built by me, to include the covering, painting and all the added details.

SIGNED: Arthur Pelton DATE: 15 MAY 2011