



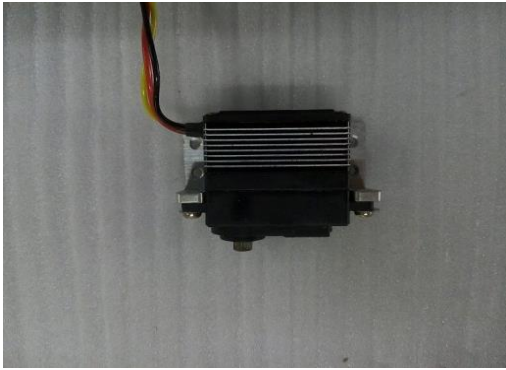
Rafale 3D Sprot Jet



This Rafale is made of full composite technology, lightweight design, to ensure the strength of the lightest weight

Length:2900mm Wingspan:2100mm

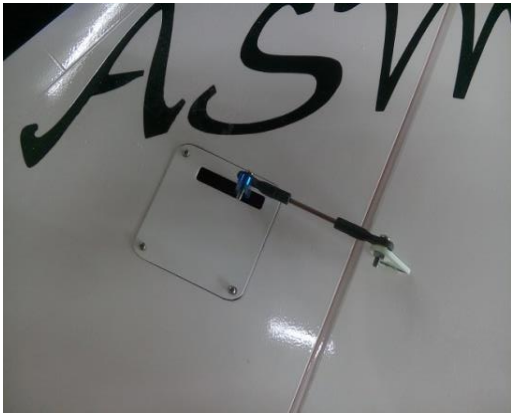
Twin turbines or Single turbine version



Servo install metal L arm



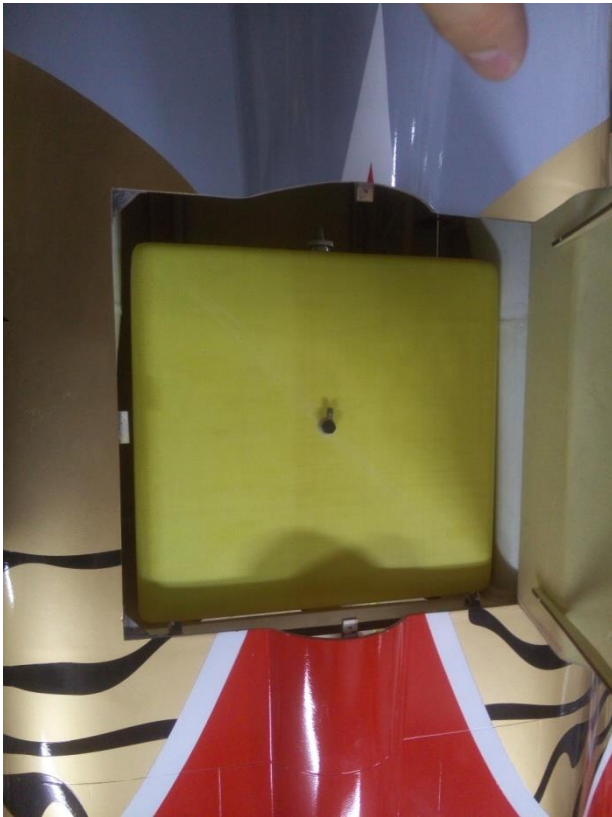
Servo install to wing



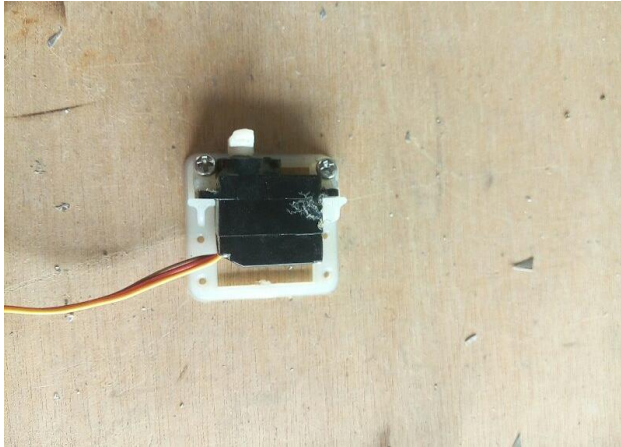
Install rod



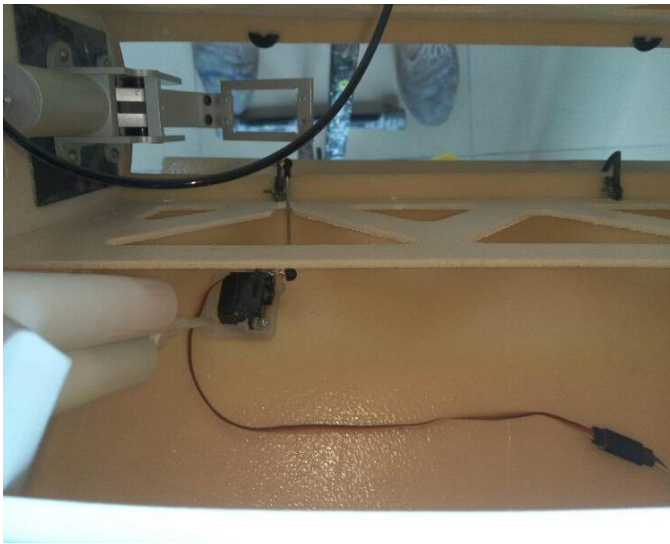
Install canard



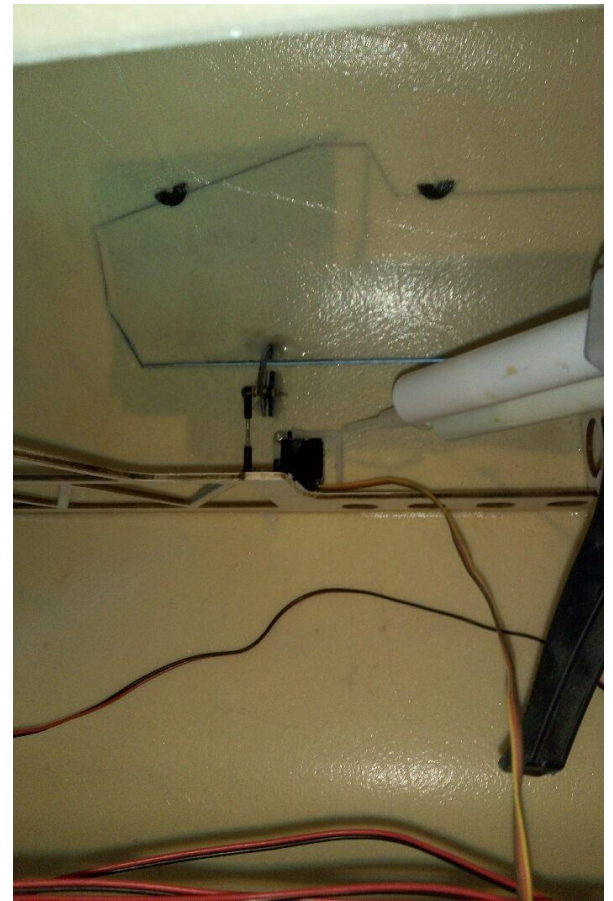
Fuel tank take out direction



The servo is installed on the fixed seat and then bonded



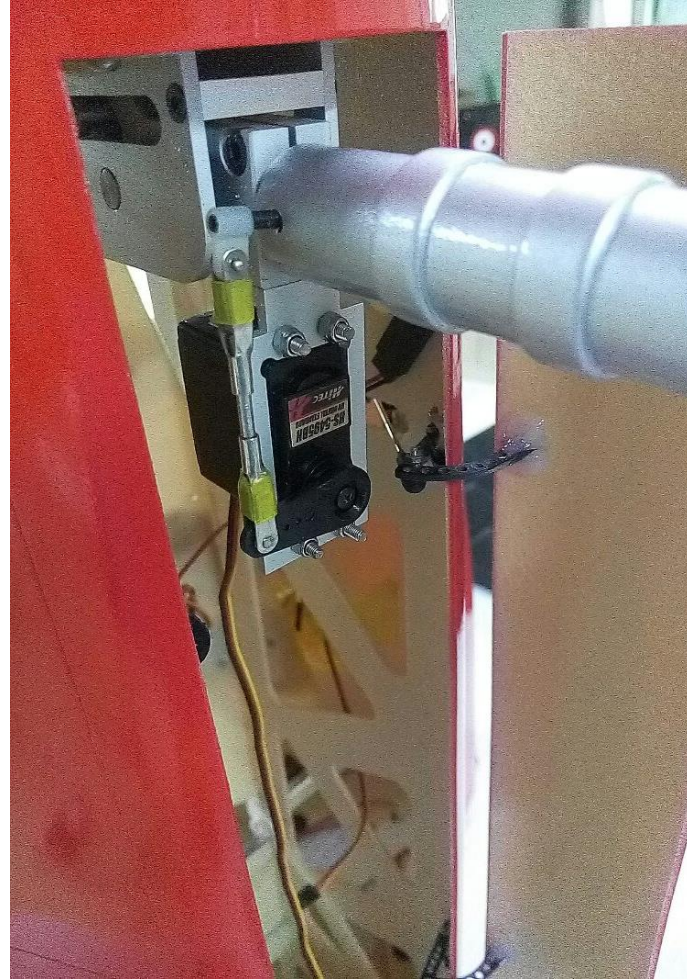
Nose landing gear door



Main landing gear door

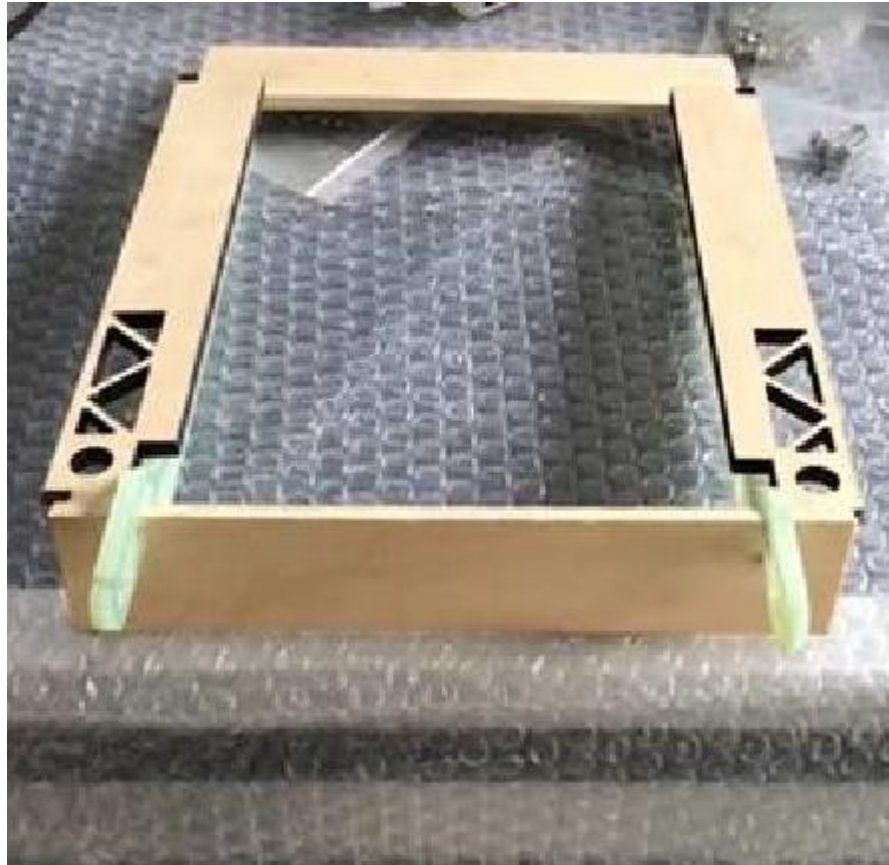


The servo is recommended to use a rubber pad



Install nose landing gear servo and rod

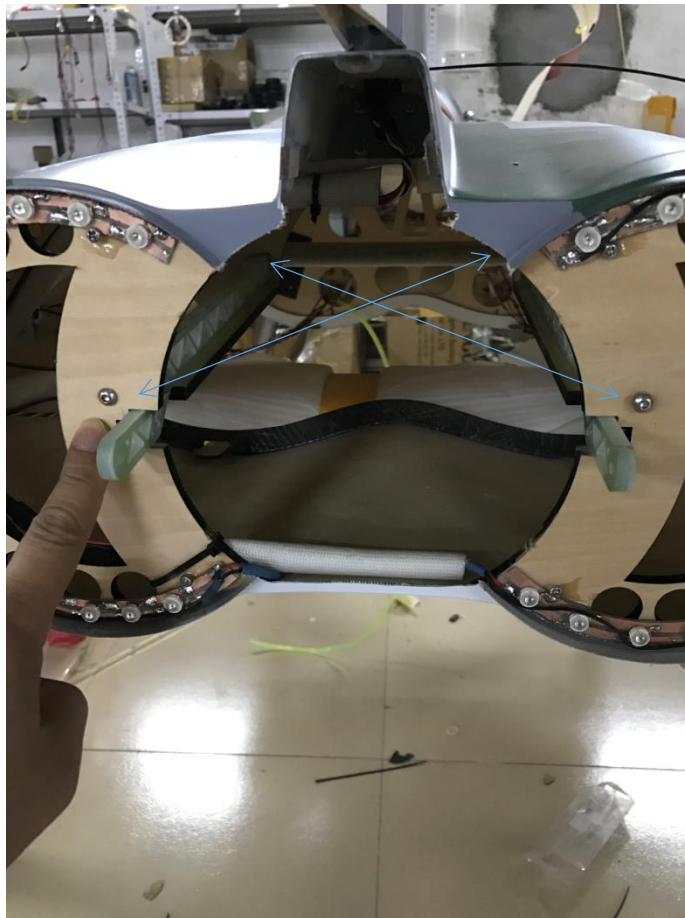




Put the engine mount on the Calibration Bracket to install engine



Engine installation completion status



After you install the engine to the engine mount, Tighten 4 screws install the engine mount to the plane.

Vector system installation



The position of the center of gravity: the wing roots leading back 160MM

- Rudder Parameter :
- canard $\pm 25\text{mm}$
- aileron $\pm 25\text{mm}$
- rudder $\pm 25\text{mm}$
- elevator $\pm 30\text{mm}$

Maserati color scheme

